

Respiralux™

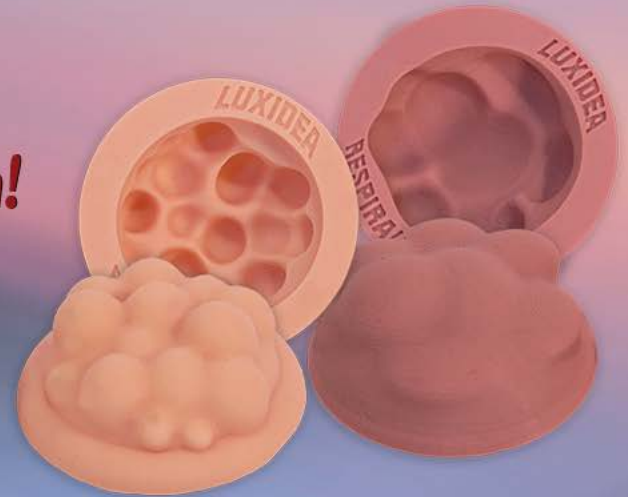
Simulated Respiratory Teaching Tools

Tactile • Durable • Innovative Design • Easily Sanitized



Airway Model Set

Hold 'em!
Squeeze 'em!
Bend 'em!
Squish 'em!



Alveolar Model Set



From the Lab to the World
Du Laboratoire au Monde

RespiraLux™

Simulated Respiratory Teaching Tools

Engage Your Patients in a New Way!

These 100% medical grade silicone models will last a lifetime – they are meant to be handled!

These teaching tools allow you to truly demonstrate the different stages of lung disease and what your patient can do to take control.

Your new teaching models have a unique pliability.

Your patients will have the opportunity to actually FEEL how an airway changes!

No matter the age, handling the models will help your patients understand the effects of their disease leading to better treatment compliance and better health.



RespiraLux Origin Story

Once upon a time Respiratory Educators came to our Co-Founder, Dr. Patel, having heard of her work with Eosinophils and Asthma. They brought with them their beloved airway models but they were very old, breaking at the seams and were definitely on their last legs.

When learning of Dr. Patel's work with 3D printing – a request was made. An idea was floated.

“Could you, possibly,” they held up the old models, “make us these?”

Dr. Patel grinned, “I think we can do even better!”

That was just the beginning! We heard YOU!

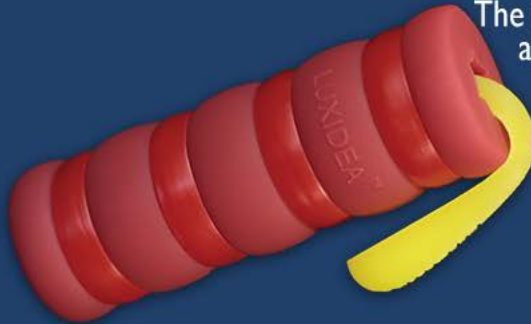
Hold 'em! Squeeze 'em! Bend 'em! Squish 'em!

Respiralux™

Teaching Tools with the Patient in Mind!

Airway Model Set

Educator's Cost: \$145.00 CAD per Set



The dark red model shows an inflamed airway during an attack. The muscles are constricted, the airway is narrowed and clogged with sticky mucus. It's nearly completely rigid!

Full adherence with maintenance therapy is required to limit the need for emergency care.



The dark pink model shows low level chronic inflammation with a narrowed airway that's more rigid. Difficult to squish!

This is the danger zone and is a forerunner to disease exacerbations. Treatment adherence is typically more difficult to achieve – most patients simply don't realize that they are one step away from a serious attack.



The light pink model represents a healthy airway. This model shows an open, flexible airway. It's squishable!

Controlling inflammation enables your patient to breathe better – participate in any activities they choose – live without restriction!

Order Yours Today at RESPIRALUX.COM



Respiralux™

Our models show an enlarged representation of the tiny Alveolar Sacs that are the workhorse of the Respiratory System. Each pair shows the inner and outer architecture of a Healthy and a Diseased Alveolar Sac.

Alveolar Model Set

Educator's Cost: \$95.00 CAD per Pair



The Inside of our Healthy Alveolus shows the delicate membranes that separate the individual pockets.



The Inside of our Diseased Alveolus shows the reduced surface area for the gas exchange with the breakdown of the fine membranes.



The Outside shows the smooth membrane.

The translucence of the silicone further depicts the ability of healthy alveoli to allow oxygen to pass through the thin membrane into the blood.

This model is squishy.



The Outside shows the thickening of the membrane.

The thicker and stiffer silicone further depicts the compromised nature of the damaged, fibrotic alveoli that limits the ability of oxygen to move into the blood. This model is more rigid.

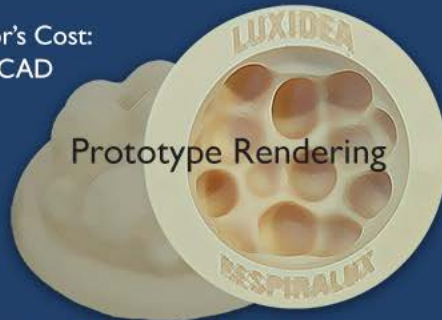
Supply is limited... Reserve yours today!
RESPIRALUX.COM



COMING SOON! You told us... We heard!

Reserve yours today and stay updated on our progress!

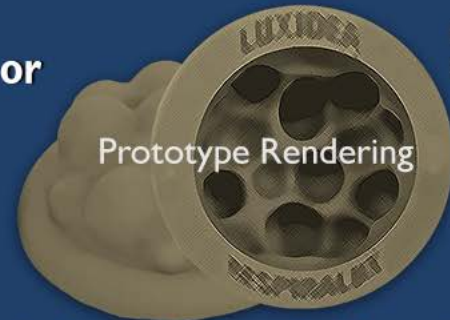
Educator's Cost:
\$50.00 CAD



Prototype Rendering

Our P-Fibro Alveolar™ Model was created to depict the thickening stiffness and scarring that occurs in Pulmonary Fibrosis.

Visit us at
RESPIRALUX.COM or
LUXIDEA.CA



Prototype Rendering

Our Smoke-Stained Alveolar™ Model was designed to illustrate the changes to the alveoli due to tobacco smoke.

Educator's Cost:
\$50.00 CAD

Important Info for all RespiraLux Teaching Models

Storage Data:

Safely store your models at room temperature,
15 to 25°C (59 to 77°F).

Minimum Temperature: -53°C (-65°F)

Maximum Temperature: 232°C (450°F)

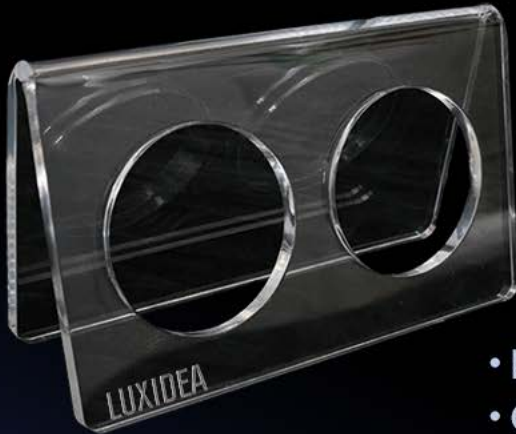
Cleaning & Sterilizing:

- Dishwasher safe, heat dry setting recommended
- Isopropyl Alcohol
- Autoclave
- Any medical grade cold sterilizing solution such as Benzarid® or Biocide 100® (suggested, not a recommendation)

Respiralux™

Airway & Alveolar Model Stands

Specifically Designed to Display your Models



- Easy to use
- Glass like appearance
- Feather light
- 12x stronger than acrylic
- Stain-proof & Shatter Resistant



Airway Model Stand

Cost: \$35.00 CAD



RespiraLux™

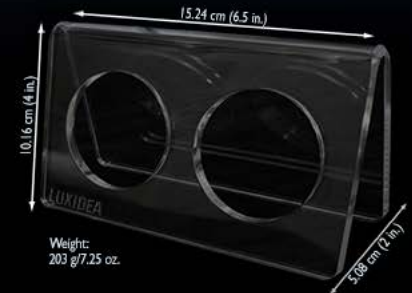
Your stands were created from a continuous piece of Polymethyl methacrylate (PMMA) acrylic,

Openings made to perfectly fit and easily display all your models!

Burnished finish creates smooth edges all around.

Alveolar Model Stand

Cost: \$30.00 CAD



Cautions:

- AVOID exposure to high temperatures and/or open flame.
- DO NOT use abrasive cloths or cleansers
- DO NOT use any alcohol based or glass cleaning product, such as Windex®, as it will cause the surface to craze (crack)

Keep them Glossy! Cleaning & Sterilizing:

USE a soft cloth or micro-cloth when hand cleaning with...

- Anti-bacterial soap & water or Anti-bacterial wipe
- Vinegar, diluted with water
- Plain Bleach, diluted with water or bleach-based wipe
- Hydrogen Peroxide 3% - 5% by volume
- Quaternary ammonium compound solutions (QUAT) such as CaviWipes® may be used (suggested, not a recommendation)
- For max shine an alcohol-free acrylic polish such as Plaskolite Optix® Plastic Cleaner may be used (recommended)

Dishwasher safe, however stand may become cloudy over time.

RespiraLux.com



Respiralux™

Accessories



Zippered Carrying Pouch

Made of durable and easily cleaned Polyester 600 D. It's roomy interior will fit your stand and your models!

The 2 outer zippered pockets can hold extra mucus or sanitizing wipes.

Cost: \$10.00 CAD

Dimensions: 20.32 cm x 25.4 cm x 3.1 cm
(8 in. x 10 in. x 1.25 in.)

Need more mucus?

*Bet you never thought that before, but we did!
We have them in sets of 3, 6 and 12!*

Just like our Models, our Mucus is made of 100% medical grade silicone. And it's stretchy!

Cost for a Set of 3: \$18.00 CAD

Dimensions: 1.27 cm x 10.16 cm (0.5 in. x 4 in.)



Replacement Rings

Our Constricted Model has 4 rings that are completely durable, but we like to have contingency plans.

The rings are made of 100% medical grade silicone.

Cost for a Set of 4: \$10.00 CAD

Manufactured in USA



LUXIDEA™
INCORPORATED

*From the Lab to the World
Du Laboratoire au Monde*

CORPORATE OFFICE:

Suite 353

305-4625 Varsity Drive NW

Calgary, Alberta T3A 0Z9

Canada

INFO@LUXIDEA.CA



All Respiralux™ Models and Accessories are
Products of Canada and sourced in Canada
Unless otherwise stated

DISCLAIMERS:

Products may not appear exactly as shown due to continual product improvements.
None of these models are toys and should not be used by children unsupervised.